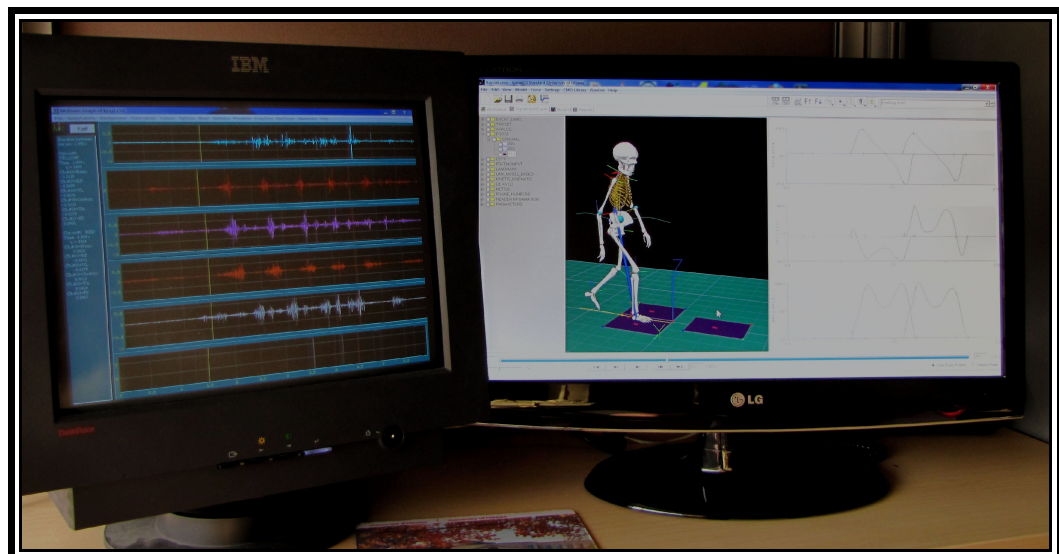


- Patla, A.E.; Adkin, A. & Ballard, T. (1999) Online steering: Coordination and control of body center of mass, head and body reorientation. *Experimental Brain Research*, 129:629-34.
- Prudham, D. & Evans, J.G. (1981) Factors associated with falls in the elderly: A community study. *Age and Ageing*, 10:141-6.
- Winter, D.A. (1980) Overall principle of lower limb support during stance phase of gait. *Journal of Biomechanics*, 13:923-7.
- Winter, D.A. (1984) Kinematic and kinetic patterns in human gait: Variability and compensating effects. *Human Movement Science*, 3:51-76.
- Winter, D.A. (1991) *The Biomechanics and Motor Control of Human Gait: Normal, Elderly and Pathological*. Second edition. Waterloo: Waterloo Biomechanics.
- Winter, D.A. (1992) Foot trajectory in human gait—a precise and multifactorial motor control task. *Physical Therapy*, 72:45-56.
- Winter, D.A.; Patla, A.E.; Prince, F.; Ishac, M. & Gielo-Perczak, K. (1998) Stiffness control of balance in quiet standing. *Journal of Neurophysiology*, 80:1211-21.
- Winter, D.A.; Prince, F.; Frank, J.S.; Powell, S. & Zabjek, K.F. (1996) A unified theory regarding A/P and M/L balance in quiet standing. *Journal of Neurophysiology*, 75:2334-43.



Gait analyses include recording muscle activity in the form of electromyograms (left screen) in addition to motion analysis and ground reaction force measurements (right screen)